



OFFICE SPACE FOR LEASE
UNITS AVAILABLE FROM
900 – 8,800 SF

225 METCALFE STREET
OTTAWA, ON



225 METCALFE STREET OTTAWA, ON

THE KENSON BUILDING



- Metcalfe Street serves as a major Northern artery downtown Ottawa;
- Easy walking distance to Provincial Courthouse and Parliament Buildings;
- A retrofit has taken place including lobby, corridors, washrooms, security card access system for evenings and weekends; HVAC system, automated and computerized elevators;
- Typical floor plate- 10,000 square feet; and
- In-House Cafeteria
- Parking Ratio 1/ 1,000



Conveniently located on Metcalfe and Cooper, close to many nearby shops, restaurants, gyms and multiple amenities.

Suite	Area (SF)	Rent	Add/Rent (PSF)(2024)	Availability
233 Metcalfe 106	7,283	TBD	\$20.39	Immediate
225 Metcalfe unit 100	1,490	TBD	\$20.39	LEASED
101	571	TBD	\$20.39	LEASED
314	893	TBD	\$20.39	LEASED
310 B	2,139.20	TBD	\$20.39	Immediate
310 C	1,138	BD	\$20.39	Immediate
414	993	TBD	\$20.39	Immediate
500	1,634	TBD	\$20.39	Immediate
507	1,143	TBD	\$20.39	Immediate



ANGELA BODDY

Leasing Manager

613-234-7000

angela.boddy@taggart.ca

225 METCALFE STREET OTTAWA, ON

SUITE 106

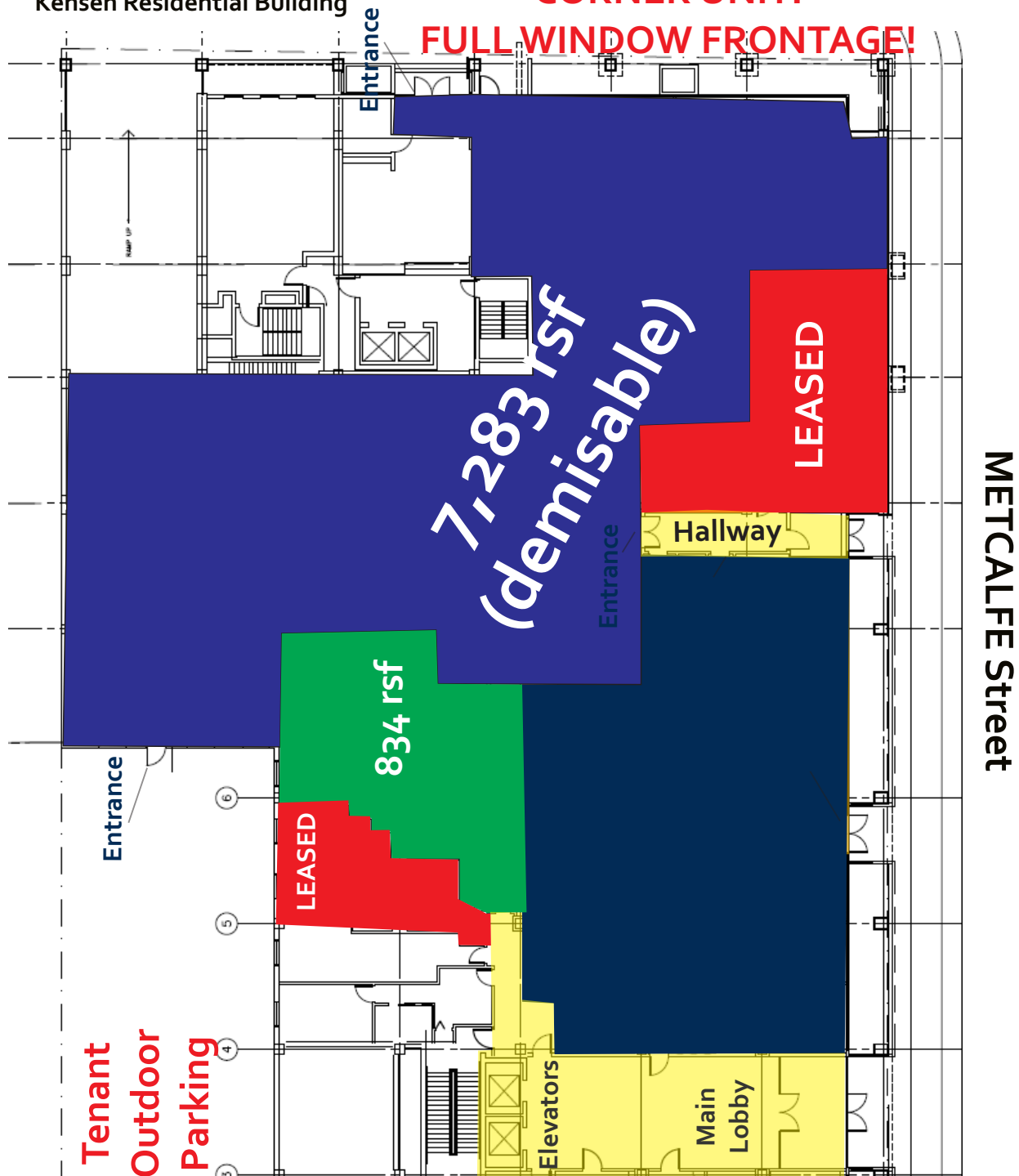
8,773 SF

Somerset Street

Kensen Residential Building

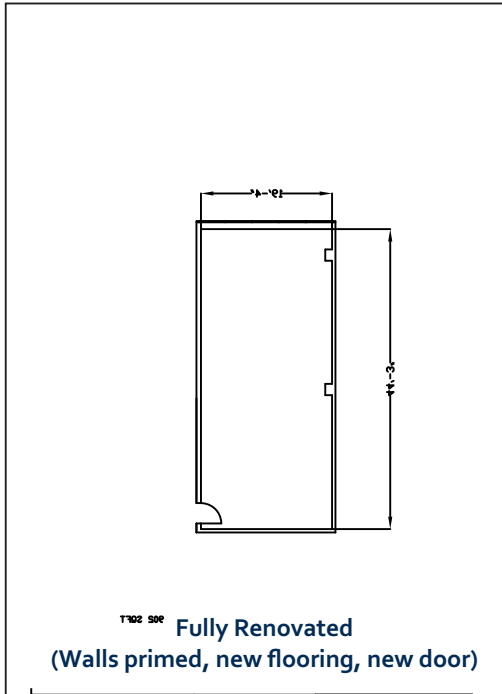
CORNER UNIT!

FULL WINDOW FRONTAGE!

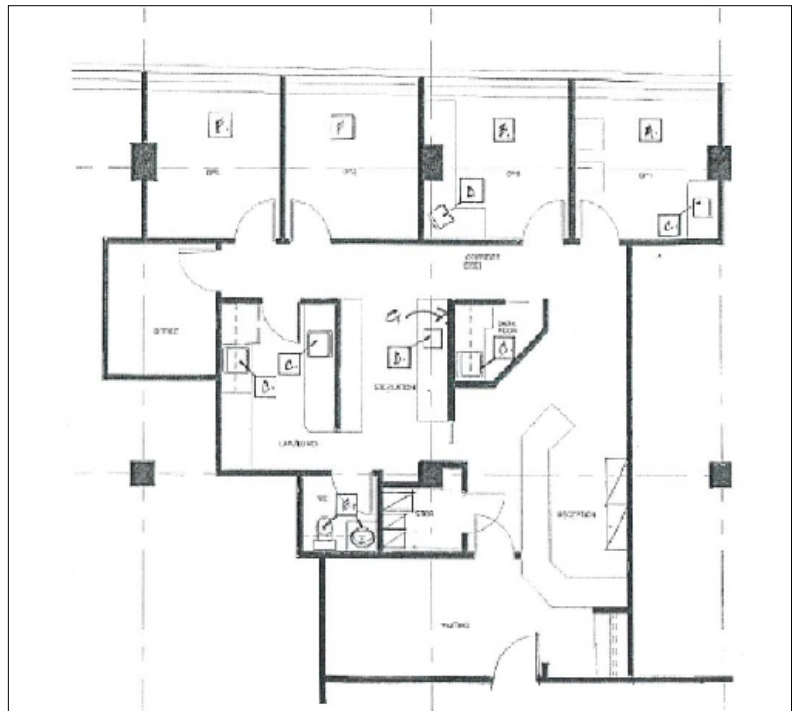


SUITE 507
1,143 SF

993 SF



Fully Renovated
(Walls primed, new flooring, new door)



ANGELA BODDY

Leasing Manager

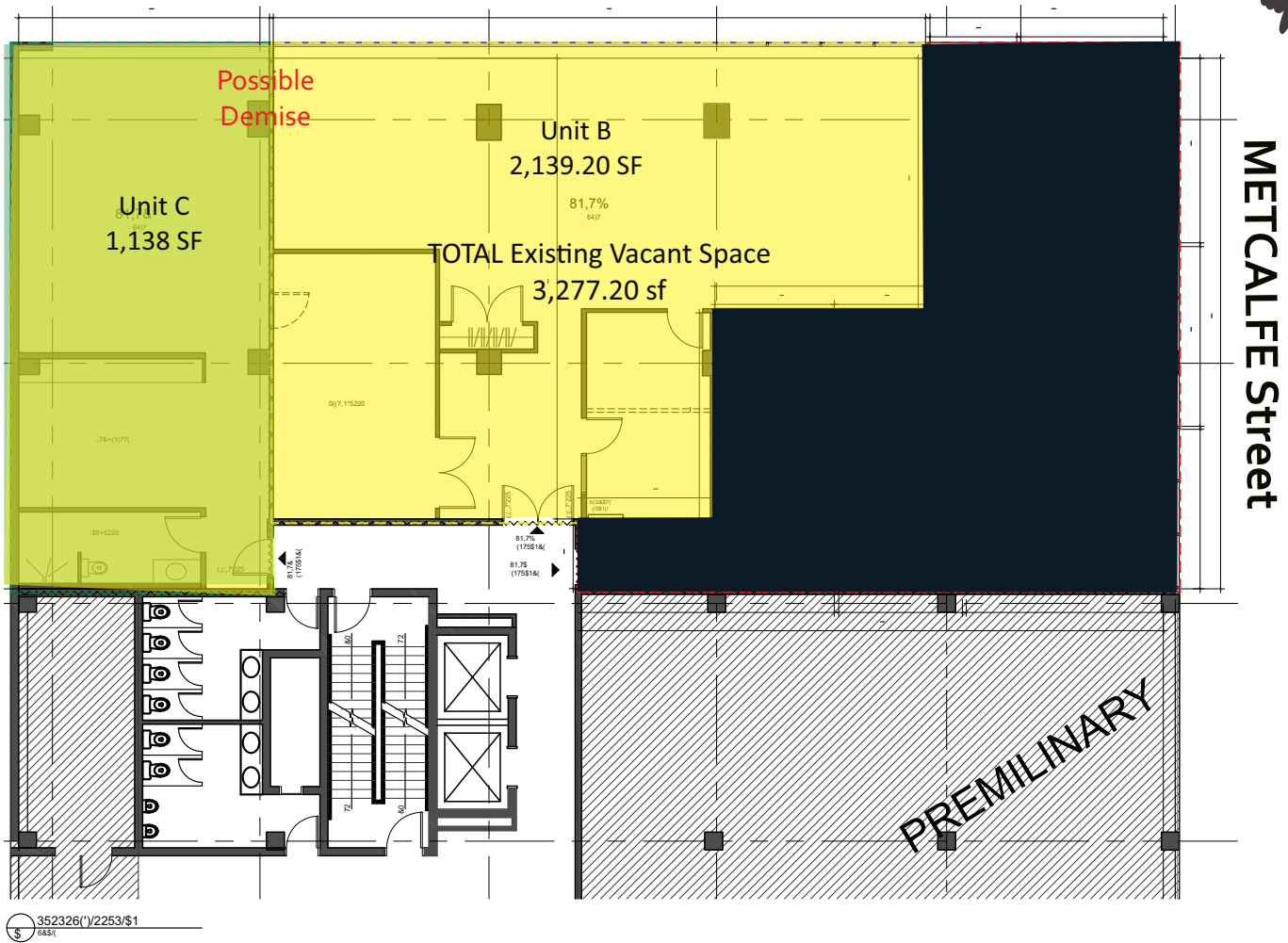
613-234-7000

angela.boddy@taggart.ca

225 METCALFE STREET OTTAWA, ON

Somerset Street
Kensen Residential Building

SUITE 310

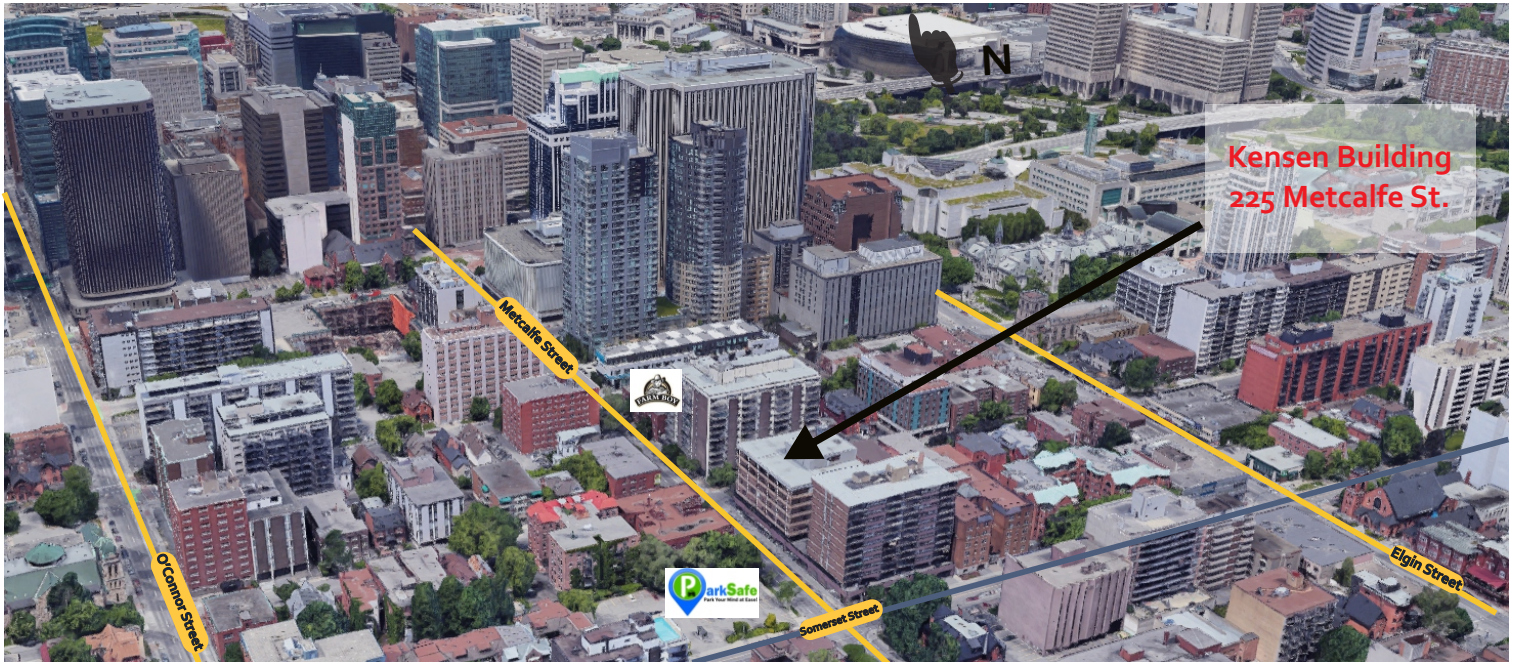


Suite Features:

- ✓ Shower/Suite washroom
- ✓ Kitchen
- ✓ Enclosed offices
- ✓ Boardroom
- ✓ Automatic Entrance Door
- ✓ Reception Area
- ✓ Open space
- ✓ Large Windows!!

225 METCALFE STREET OTTAWA, ON

LOCATION



JOIN EXISTING TENANTS SUCH AS:



Information furnished regarding these properties is from sources deemed reliable, but no warranty or representation is made as to the accuracy thereof. The same is submitted to errors, omissions, change of price or other conditions, prior to sale or lease, or withdrawal without notice.



ANGELA BODDY Leasing Manager
613-234-7000
angela.boddy@taggart.ca